

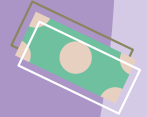
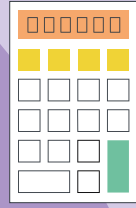
# COST OF LIVING

- Help
- Advice
- Grants
- Support

With spiralling energy bills, food prices and other essential costs we know that many households in our district will be struggling.



[www.warwickdc.gov.uk](http://www.warwickdc.gov.uk)



**We would like to signpost you to the government and local support packages available, as well as professional organisations who are able to offer advice and assistance during these difficult times.**

Further contacts and useful tools for calculating benefit entitlement, budgeting and details of advice and support are available at [www.warwickdc.gov.uk/costofliving](http://www.warwickdc.gov.uk/costofliving) this includes help with: -

- Benefits and Rent
- Water bills
- Gas and electric bills
- Food Support
- Financial Advice and calculators
- Family and childcare
- Free school meals
- Housing
- Health and Wellbeing
- How to access Citizens Advice

## Government support

### **The government has announced the following packages of payments**

to help most households claiming benefits.

The payments will be made automatically to those who are eligible, where possible, directly into their bank accounts.

#### **£650 cost of living payment**

- to be made to households on a low income who are receiving any one of the following benefits: Universal Credit, Job Seekers Allowance, Income-related Employment and Support

Allowance, Income Support, Working Tax Credit, Child Tax Credit, Pension Credit.

#### **Winter Fuel Payment up to**

**£300** - for people born on or before 26 September 1956. This is in addition the original Winter Fuel Payment of £250 to £600 for over 65s who are eligible for support.

#### **£150 Disability Cost-of-Living Payment**

- if you are entitled, you should receive this by end October 2022.

**A £150 non-repayable council tax rebate** - for all households that are liable for council tax in bands A to D in England. The rebate has been made directly by Warwick District Council from by September 2022.

**Government Energy Bill Support Scheme** - all households with

an electricity supply in England (Scotland and Wales), will have **£400 taken off their energy bills between October 2022 and March 2023 regardless of their income**. Metered users will receive a monthly discount (with redeemable discount vouchers for those with old-style meters).

## Warwick District Council Support

### **Council Tax Reduction**

**Scheme** - Households on a low income including the self-employed may be entitled to a reduction in their Council Tax.

### **Discretionary Housing**

**Payments** - These are payments to help pay your rent if you get housing benefit or the housing element of universal credit and the amount you receive does not cover your full rent.

**Housing Benefit** - Housing benefit was replaced by Universal Credit in 2018, however you may still get benefit to help you to pay your rent if you are state pension age or are living in temporary accommodation or accommodation where care and support is being provided.

### **Financial Inclusion Team**

The Council's team can provide a variety of support to our customers living in our council homes, this includes advice on rent payments, benefits, budgeting, charity applications, foodbank vouchers and fuel poverty.

Further information is available by visiting **[www.warwickdc.gov.uk/costofliving](http://www.warwickdc.gov.uk/costofliving)** or calling the following numbers:

### **Council tax and benefits**

01926 456760

### **Housing and homelessness support**

01926 456129

### **Help with your finances (Council tenants)**

01926 456454/456336

# Warwick District Council Support

**The Council offices at Riverside House, Milverton Hill, Leamington Spa CV32 5HZ** are open Monday to Friday from 9.30am to 4.30pm for walk-ins and appointments.

## Energy Saving

**Act On Energy** is a local charity providing all residents with free help on all home energy efficiency matters. This includes managing fuel debt and access to hardship funds. They also can help with getting funding for those on lower incomes or on means tested benefits and a health condition.

**Tel:** 0800 988 2881

**Visit:** [www.actonenergy.org.uk](http://www.actonenergy.org.uk)

### Energy and money saving tips and advice

Simple changes to the way you use energy in your home can help save £100s per year. Follow these simple steps to help keep warm and lower your energy bills:

- ✓ Cover draughts to stop the cold getting in
- ✓ Phone your energy provider to see about getting the best tariff
- ✓ Check if you are eligible for help to pay your water bill
- ✓ Give your wardrobe a revamp - lots of thinner layers will keep you warmer
- ✓ Plan events and activities that will keep you moving
- ✓ Turn the thermostat down 1C, ideal temperature is between 18 to 21 C
- ✓ Do at least one less machine wash a week
- ✓ Only boil the water you need
- ✓ Have shorter showers and fewer baths
- ✓ Turn the heating off even if you are popping to the shops
- ✓ Put lids on saucepans while cooking
- ✓ Thick curtains can help keep the heat in
- ✓ Turn off appliances when not in use, instead of leaving on standby

## Community centres and local support schemes

**Citizens Advice South Warwickshire** offer a range of advice and information relating to benefits, debt, housing, employment, family, consumer, education, tax, law and rights issues.

**Tel:** 0300 330 1183

or **Email** us using our web form on

**[www.casouthwarwickshire.org.uk](http://www.casouthwarwickshire.org.uk)**

**Warwickshire Local Welfare Scheme** helps our most vulnerable residents at times of unavoidable crisis when they have no other means of help.

To enquire or to apply for support,

**Tel:** 0800 408 1448 or 01926 359182.

Monday to Thursday 9am-5pm

Friday 9am - 4.30pm

**Your local community centres** are **warm and welcoming places** that can provide support and assistance with health and wellbeing, employment, financial support, food support, mental health, energy concerns, loneliness and isolation. They can also help you to access the internet.

### **Brunswick Hub**

98-100 Shrubland St, Leamington Spa CV31 3BD

**Tel:** 01926 422123

### **Chase Meadow Community Centre**

Narrow Hall Meadow, Warwick CV34 6BT

**Tel:** 01926 490845

### **Crown Routes One Stop Shop**

Acorn Court, Stockton Grove, Lillington, Leamington Spa CV32 7NP

**Email:** [crownroutes@brunswickhlc.org.uk](mailto:crownroutes@brunswickhlc.org.uk)

**Tel:** 07874 865617

### **The Gap**

39 Oakwood Grove, Warwick CV34 5TD

**Tel:** 01926 494200

## Community centres and local support schemes

### **The Ahmadiyya Muslim Community Centre**

Riverside, Adelaide Road,  
Leamington Spa CV32 5AH

**Tel:** 01926 330430

**Email:** leamingtonspa@ahmadiyyauk.org

### **Packmores Community Centre**

Lyttelton Rd, Warwick CV34 5EP

**Tel:** 01926 492488

### **SYDNI Centre**

Cottage Square, Sydenham,  
Leamington Spa CV31 1PT

**Tel:** 01926 422071

### **Leamington and Warwick Children and Family Centres**

Advice for families with children aged 0-19 appointments only

**Tel:** 01926 337506 to find your nearest centre.

### **Kenilworth Advice Hub**

Kenilworth Library, Smalley Place,  
Kenilworth CV8 1QG

Open Thursdays 9.15am to 4pm  
for those living in CV8 appointments only

**Tel:** 0300 330 1183

### **Shire Hall Advice Hub**

Shire Hall, Market Place, Warwick -  
Open Wednesdays 9.15am to 4pm for those living in CV34  
appointments only

**Tel:** 0300 330 1183

### **Sikh Cultural and Sports Community Centre**

17a-17b Queensway Trading Estate Queensway  
Leamington Spa CV31 3LZ

**Tel:** 01926 883129

## Help with food and welfare

For information about the **local foodbanks** listed below

**Tel:** 07850 293383 or **email:** [info@warwickdistrict.foodbank.org.uk](mailto:info@warwickdistrict.foodbank.org.uk)

### **St Margaret's Church**

Chapter House  
Church Close, Whitnash  
CV31 2HJ

Open Mondays 11am to 1pm

### **Southorn Court, Lillington**

The Crest, Lillington,  
Leamington Spa CV32 7PU  
Open Tuesdays 11am to 1pm

### **St Mary's Church & Community Centre**

St Mary's Road, Leamington  
Spa CV31 1JW  
Open Wednesdays 1pm to 3pm

### **St Paul's Church**

Leicester Street, Leamington  
Spa CV32 4TE  
Open Thursdays 2pm to 4pm

### **The Westbury Centre**

Westlea Road,  
Leamington Spa CV31 3JE  
Open Fridays 11am to 1pm

### **Saltisford Church**

Albert Street, Warwick CV34 4JX  
Open Fridays 1pm to 3pm

### **The Kenilworth Centre**

Abbey End Car Park,  
Kenilworth CV8 1QJ  
Open Fridays 9.30am to 11.30am

### **Helping Hands Community**

Project offers food and a range of  
support to local people in need.  
9a Althorpe Street,  
Leamington Spa CV31 2AU  
**Tel:** 01926 768500

### **Soup Kitchen**

Monday-Thursday  
6.30pm-7.30pm

### **Breakfast Club**

Tuesdays 10.30-11.30am

### **Lillington Community Pantry**

Food and community advice  
for members of The Pantry  
11am to 3pm on Thursdays  
and Fridays. For further  
information and membership.

**Tel:** 01926 350 800  
or **email** [lillington@  
thecommunitypantry.org.uk](mailto:lillington@thecommunitypantry.org.uk).

## If your situation is starting to affect your mental health

**Wellbeing for Warwickshire** can help you get information, advice, and the support you need. Able to help if you are feeling low, anxious, or stressed, the phone line is available 24 hours a day, seven days a week. 365 days a year. **Tel:** 0800 616171